

# Catholic Health Skilled Nursing Facility Visitation Guidelines



**To protect your safety and the safety of our residents, patients, and staff, the following visitation guidelines are now in effect:**

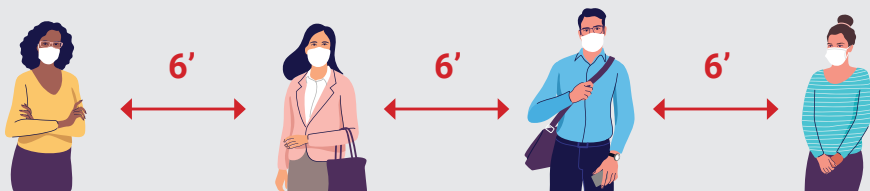
- Suggested visiting hours are 11 am - 7 pm, however residents may have visitors at any time.
- Visitors are encouraged (but not required) to take a COVID test prior to visiting. Free test kits are available at the facility.
- Facilities may limit the number of visitors in the building at any given time in order to ensure safe social distancing and infection control practices.
- Please do NOT visit if you have had COVID-19 exposure or symptoms in the past 7 days.
- Visitors are discouraged for residents/patients with active or suspected cases of COVID-19 or under a quarantine period.
- Visitors are encouraged to wear a mask but masking is not required.
- Visitors are encouraged to practice physical distancing.
- Visitors must sign in prior to visiting.
- Visitors will not be discriminated against on the basis of age, race, color, national origin, religion, sex, gender identity, sexual orientation or disability.

***A detailed visitor policy is available at each site. Please let a member of our care team know if you have any additional questions.***

**These guidelines are in place for everyone's safety. We reserve the right to alter them or make exceptions at the discretion of our care team. Visitors who do not comply, will be asked to leave.**

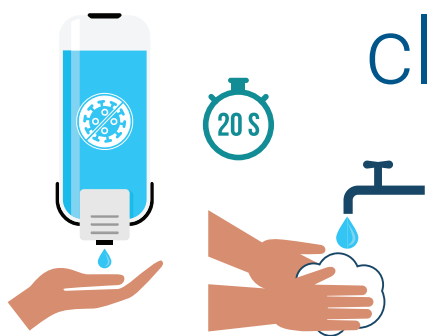
# Guidelines for Visitors

practice **physical** distancing



## STAY 6 FEET APART

Stay at least 6 feet away from other people, including the resident you are visiting.



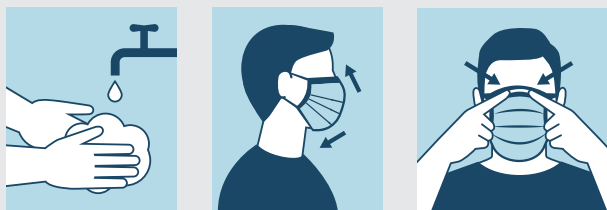
clean your **hands** often

Wash your hands **OFTEN** with **SOAP AND WATER** or **HAND SANITIZER** with at least **60% ALCOHOL** for at least 20 seconds, and always **BEFORE** and **AFTER** visitation.

how to **properly** wear a mask

**MASKS MUST BE WORN AT ALL TIMES.** Follow these important guidelines:

#1



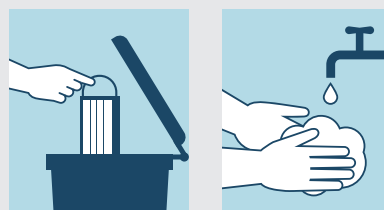
Clean your hands with alcohol-based sanitizer or soap and water before putting on your mask. Masks must fully cover the nose and mouth, pinched across the nose with no gaps between the mask and face.

#2



Avoid touching your face or repositioning the mask; if you do, clean your hands with alcohol-based sanitizer or soap and water.

#3



After use, please dispose of your mask in the proper receptacle and wash your hands thoroughly.



View a complete list of Catholic Health's Visitation Guidelines at [chsbuffalo.org/visitor-guidelines](https://chsbuffalo.org/visitor-guidelines).

Please speak with a member of our care team if you have any additional questions.